

# THANK YOU!

For choosing the **QUICKPLAY  
SAFETY BASE SET.**

We hope you enjoy and get years  
of use out of this product.

If you have any issues, please  
do not return it to the store.  
Instead contact us directly:

**support@quickplaysport.com**

At QUICKPLAY we think sport is all about taking part. We develop innovative products that help athletes and coaches at all levels of sport, perform to the best of their ability. If you have any queries or suggestions about how we can improve our products, we'd love to hear them. Please feel free to get in touch.

**support@quickplaysport.com**

© 2025 Quick Play Sport Limited. All Rights Reserved.

# **QUICKPLAY**

## **SAFETY BASE SET**

### **INSTRUCTIONS**



**GOT AN ISSUE?  
DON'T RETURN  
TO THE STORE**

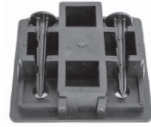
please contact us instead:  
**support@quickplaysport.com**

## CONTENTS:

BASES x3



GROUND PLATES x3



### **SLIDING IS A DANGEROUS MANOEUVRE. UNDERTAKE AT YOUR OWN RISK:**

- Injuries can and do occur when sliding is practised, even without the presence of a base or home plate.
- Sliding is synonymous with injury. These injuries range from simple contusions, to broken bones, and in some instances, permanent paralysis.
- Players of all skill levels are sometimes injured when sliding on fields / surfaces that are professionally maintained. Even greater risks are incurred when non-professional players practice sliding on fields that are not maintained at a professional level.
- Players, coaches, and umpires are all responsible for checking the playing field conditions before and during the game.
- Players who choose to slide into a base or home plate risk the probability of potential injury.

### **WARNINGS:**

- The QuickPlay Safety Base Set is to be used ONLY as a reference point on a baseball/softball diamond. Although this product has been developed to move on impact, that does not guarantee reduced likelihood of injury in conjunction with sliding.
- The purchaser of these products should take warning that a deviation from the installation instructions could increase the risk of injury to game participants.
- Installers of field equipment should follow the manufacturer's installation and safety instructions.
- Those players who choose to make sliding an integral part of the game, may wish to minimize the risk of injury by using a simple throw down base, instead of this product.
- Must be assembled by an adult.
- Use caution when using this product and use only under adult supervision.
- Only for use on a flat surface.
- Pack away after use. Do not leave outdoors in adverse weather conditions.
- Regularly check for wear and tear and stop using if any part of it breaks. Failure to do this may result in injury.
- Keep away from heat sources and do not leave in a hot vehicle.
- This product is not suitable for children under 12 years of age.

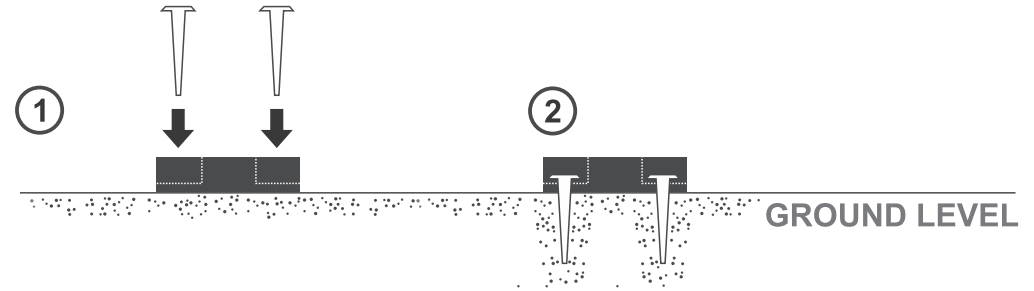
### **NOTICE:**

The purchaser and/or installer of this product is responsible for advising the end user of the possibility of injury while sliding into the base. The installer and/or purchaser shall read and follow safety and installation instructions packaged with this product. All equipment is sold on this condition and by no means can any representative waive or alter this position.

### **STATEMENT OF POLICY:**

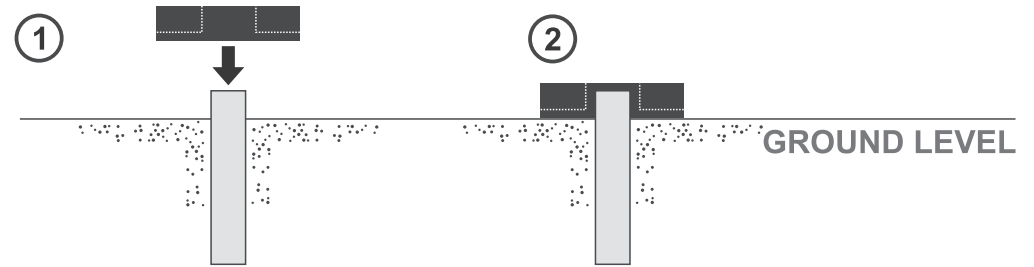
The user assumes all risk entailed in actions, since QuickPlay cannot guarantee freedom from injury. Use of this equipment cannot prevent serious injury or death. Sporting events are dangerous in nature and the Participant assumes ALL RISKS therein. It is the Dealer/Distributors responsibility to pass this information to the consumer.

### **GROUND PLATE SET UP:**

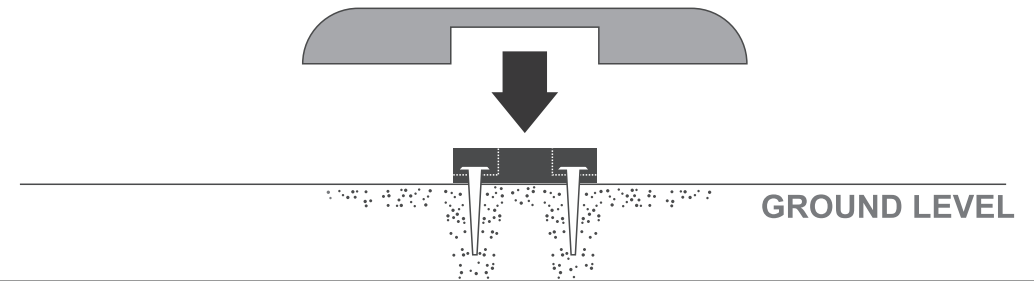


### **ALTERNATIVE SET UP:**

(If playing field has permanently installed base ground anchors / posts)



### **PLACE BASE ON GROUND PLATE:**



**IN USE:** Base releases from the Ground Plate when impacted with sufficient force.

